

RP 450 V

WITH STAGE V TECHNOLOGY



HIGH PERFORMANCE
LOW EMISSIONS

A TECHNICALLY ADVANCED MEWP WITH TIER 5 ENGINE AND STAGE V TECHNOLOGY



KEY FEATURES

- TIER 5 ENGINE WITH STAGE V TECHNOLOGY
- 16.68m WORKING HEIGHT
- WORKING AND TRAVELLING OVER THE SIDE
- 180-DEGREE BASKET OSCILLATION
- 360-DEGREE TURRET ROTATION
- 450kg BASKET
- DYNAMIC NEW SHAPE
- AVAILABLE WITH NEW PA64 PANTOGRAPH (Range 4.2m to 6.4m)

FULLY INTEGRATED CONTROL PANEL WITH FULL CRUSH PROTECTION



All key controls and rail functions are now instantly to hand for the operator, supported by a dynamic visual display demonstrating all aspects of the machine's functionality, including speedometer, basket position, diagnostics, alarms, pantograph[†], rear view camera[†] and much more. † Option

PA64 PANTOGRAPH (option)

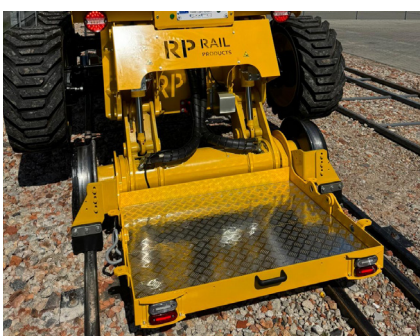


PA64 Pantograph shown here on RP 450HV

KEY FEATURES

- Used exclusively with our range of MEWPs
- Input height contact wire with tolerance +5-5mm
- Measuring position (out of centre) contact wire L or R
- Measuring through S&C work
- Visual display date and time
- Datalogging measurement in graphics and csv file (Excel)
- Downloadable by USB stick
- Each stop and go new datalog file
- Visual display measurement height and staggers
- Cost effective in combination with the MEWP

RP 500 CARRY PLATFORM (option) FOLDING PLATFORM FOR ALL RAIL PRODUCTS MEWPS



KEY BENEFITS

- Compact platform is easily attached to the bogeys of the MEWP
- Ideal for carrying extra tools and materials
- Max load: 500kg
- Platform size: 1,100 x 900mm
- Folds upright for easy transportation
- Built-in lights system
- Sturdy steel construction with aluminium floor
- Total weight of carry platform: 70kg

TECHNICAL SPECIFICATION

Specifications RP 450V on Rail

Working height	16.68m	Max. cant.	180mm
Platform floor height	14.68m	Working and travel over the side	Over 360°, max.7.60m
Max. outreach	8.02m	Hydraulic tank capacity	53L
Up and over clearance	7.40m	Diesel tank capacity	51L
Jib movement	+70°/-70°	Total weight	11,600kg
Basket rotation	+90°/-90°	Width (overall width with basket)	2.45m
Turret rotation	360°	Length	7.38m
Capacity	450kg	Length (Travel / transport)	6.15m
Maximum allowed wind speed	45km/h	Height	2.47m
Basket size	2.30 x 0.90m	Height (Travel / transport)	2.94m
Lifting time	40s	Inside turning radius	1.32m
Engine Kubota type D1105-E4B, 3 cylinder Stage V, 18.7 kWMax	24.5hp	Outside turning radius	3.68m
Working speed on rail	1.0km/h	Outside turning radius with basket	6.39m
Maximum travel speed rail	10km/h	Ground clearance	42.5cm
Max. gradient	60%	Wheelbase	3.75m

EQUIPMENT AND OPTIONS

Standard equipment

- Large basket
- 4 wheel drive
- Proportional controls
- 4 simultaneous movements
- Foam filled tyres
- Differential lock
- Limited-slip front axle
- Diagnostic-calibrator
- Hourmeter
- Low-fuel indicator
- Horn
- Flashing beacon
- Audible and visual tilt and overload alarms
- Slope over ride
- Lifting eyes
- Electric emergency pump
- Prefitted for 230 V
- Dead man's pedal
- Tool tray
- Protective cover (lockable)
- Oscillating axle for road
- Pendeling axle for rail
- Continuous rotation
- 4 lights in basket, 1 at the counterweight

Options

- 230v connection with circuit breaker on the arm head
- Access control keypad for easy link
- Generator (3.5 or 5 kW)
- Working light
- Safety valve
- Spark arresting muffler
- Highly capacity battery
- Sound signal for all movements
- Multi gauge chassis adjustable 1067-1435-1600 mm (MG1)
- Multi gauge chassis adjustable 1000-1435 mm (MG2)
- Insulated wheels
- Different rail wheel profiles
S 1002 profile, diam. 470 mm. (std.)
C profile, diam. 450 - 470 mm
E profile, diam. 450 - 470 mm
ANZR G 1 profile, diam. 450 - 470 mm;

Mixed profile, diam. 470 mm.
(for local track)

- PA 64 hydraulically adjustable pantograph, which is adjustable in height from 4.200 till 6.420 mm. The height can be recorded, and the readout can be taken by USB (type preferably 2.0), readout will show an excel file with all recordings, (height, stagger etc.) as well as a graphic drawing. With the pantograph build on the machine, the floor height will be 12.880 mm.
- 360° adjustable ALO, electronically adjustable in parameters screen
- RP 500 Carry Platform.
Max load 500kg, own weight 70kg
- ATR 450 Aluminium Trailer, capacity 450 kg, own weight 70.9 kg.

Compliant to the following standards

- EN-15746-1 :2020- Road Rail machines and associated equipment
- EN 15746-2 :2020- Road Rail machines and associated equipment
- EN 280 A 1:2011 + A2:2015 Mobile elevating platforms
- EN 15955 1&2 :2013 - Railway applications demountable machines
- 2006:42/EG Machine Guideline

Weights

The weight of the RP 450V is 11.600 kg. 'Add ons' like pantograph (280 kg) and trailer ATR 450 (fully loaded 520.9 kg) are excluded in this weight.

Rail Products

Mountcairn, 22 Cairneymount Road, Carluke,
South Lanarkshire ML8 4EN

Phone: 0044 20 7101 0727/0044 1555 773 027

Mobile: 0044 7788 924 848

derek@railproducts.uk.com www.railproducts.uk.com

Rail Products trading as Rail Products UK Ltd.