

RP 450MV

MULTI-GAUGE MEWP WITH
STAGE V TECHNOLOGY



**ADJUSTABLE TRACK GAUGE
ALLOWS THE MEWP TO OPERATE
ON ALL MAJOR RAILWAYS**

A TECHNICALLY ADVANCED MULTI-GAUGE MEWP WITH TIER 5 ENGINE AND STAGE V TECHNOLOGY



KEY FEATURES

- TIER 5 ENGINE WITH STAGE V TECHNOLOGY
- DYNAMIC NEW SHAPE
- 16.68m WORKING HEIGHT
- WORKING AND TRAVELLING OVER THE SIDE
- 180-DEGREE BASKET OSCILLATION
- 360-DEGREE TURRET ROTATION
- 450kg BASKET
- AVAILABLE WITH NEW PA64 PANTOGRAPH (Range 4.2m to 6.4m)

FULLY INTEGRATED CONTROL PANEL WITH FULL CRUSH PROTECTION



All key controls and rail functions are now instantly to hand for the operator, supported by a dynamic visual display demonstrating all aspects of the machine's functionality, including speedometer, basket position, diagnostics, alarms, pantograph[†], rear view camera[†] and much more. † Option

PA64 PANTOGRAPH (option)

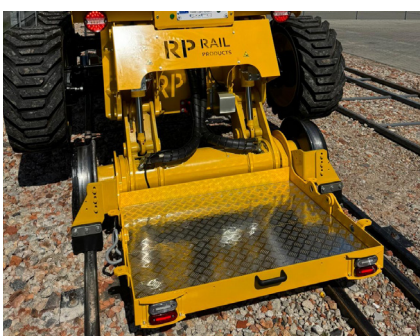


PA64 Pantograph shown here on RP 450HV

KEY FEATURES

- Used exclusively with our range of MEWPs
- Input height contact wire with tolerance +5-5mm
- Measuring position (out of centre) contact wire L or R
- Measuring through S&C work
- Visual display date and time
- Datalogging measurement in graphics and csv file (Excel)
- Downloadable by USB stick
- Each stop and go new datalog file
- Visual display measurement height and staggers
- Cost effective in combination with the MEWP

RP 500 CARRY PLATFORM (option) FOLDING PLATFORM FOR ALL RAIL PRODUCTS MEWPS



KEY BENEFITS

- Compact platform is easily attached to the bogeys of the MEWP
- Ideal for carrying extra tools and materials
- Max load: 500kg
- Platform size: 1,100 x 900mm
- Folds upright for easy transportation
- Built-in lights system
- Sturdy steel construction with aluminium floor
- Total weight of carry platform: 70kg

TECHNICAL SPECIFICATION

Specifications RP 450MV on Rail

Multi gauge frames will be made in the following configurations:
- dual gauge, mechanically adjustable from 1000-1435mm
- tri gauge, mechanically adjustable from 1067-1435-1600mm

Working height	16.68m
Platform floor height	14.68m
Max. outreach	8.02m
Up and over clearance	7.40m
Jib movement	+70°/-70°
Basket rotation	+90°/-90°
Turret rotation	360°
Capacity	450kg
Maximum allowed wind speed	45km/h
Basket size	2.30 x 0.90m
Lifting time	40s
Engine Kubota type D1105-E4B, 3 cylinder Stage V, 18.7 kWMax	24.5hp
Working speed on rail	1.0km/h
Maximum travel speed rail	10km/h

Max. gradient	60%
Max. cant	180mm
Dual gauge, travel over the side	over 360° till 105 mm cant
Working radius over 90°, max. reach	6.50 m
Working radius over 45°, max. reach	7.50 m
Hydraulic tank capacity	53L
Diesel tank capacity	51L
Total weight	11,600kg
Width (overall width with basket)	2.45m
Length	7.38m
Length (travel / transport)	6.15m
Height	2.47m
Height (travel / transport)	2.94m
Inside turning radius	1.32m
Outside turning radius	3.68m
Outside turning radius with basket	6.39m
Ground clearance	42.5cm
Wheelbase	3.75m

EQUIPMENT AND OPTIONS

Standard equipment

- Large basket
- 4 wheel drive
- Proportional controls
- 4 simultaneous movements
- Foam filled tyres
- Differential lock
- Limited-slip front axle
- Diagnostic-calibrator
- Hourmeter
- Low-fuel indicator
- Horn
- Flashing beacon
- Audible and visual tilt and overload alarms
- Slope over ride
- Lifting eyes
- Electric emergency pump
- Prefitted for 230 V
- Dead man's pedal
- Tool tray
- Protective cover (lockable)
- Oscillating axle for road
- Pendeling axle for rail
- Continuous rotation
- 4 lights in basket, 1 at the counterweight

Options

- 230v connection with circuit breaker on the arm head
- Access control keypad for easy link
- Generator (3.5 or 5 kW)
- Working light
- Safety valve
- Spark arresting muffler
- Highly capacity battery
- Sound signal for all movements
- Insulated wheels
- Different rail wheel profiles
S 1002 profile, diam. 470 mm. (std.)
C profile, diam. 450 - 470 mm
E profile, diam. 450 - 470 mm
ANZR G 1 profile, diam. 450 - 470 mm;
Mixed profile, diam. 470 mm. (for local track)
- PA 64 hydraulically adjustable

pantograph, which is adjustable in height from 4.200 till 6.420 mm. The height can be recorded, and the readout can be taken by USB (type preferably 2.0), readout will show an excel file with all recordings, (height, stagger etc.) as well as a graphic drawing. With the pantograph build on the machine, the floor height will be 12.880 mm.

- 360° adjustable ALO, electronically adjustable in parameters screen
- RP 500 Carry Platform. Max load 500kg, own weight 70kg
- ATR 450 Aluminium Trailer, capacity 450 kg, own weight 70.9 kg.

Compliant to the following standards

- EN-15746-1 :2020- Road Rail machines and associated equipment
- EN 15746-2 :2020- Road Rail machines and associated equipment
- EN 280 A 1:2011 + A2:2015 Mobile elevating platforms
- EN 15955 1&2 :2013 - Railway applications demountable machines
- 2006:42/EG Machine Guideline

Weights

The weight of the RP 450MV is 11,600 kg. 'Add ons' like pantograph (280 kg) and trailer ATR 450 (fully loaded 520.9 kg) are excluded in this weight.

Rail Products